

Bentley[®]
Advancing Infrastructure

 CONNECT Edition



RAM[®] Elements CONNECT Edition

The Structural Engineer's Toolkit System

For analysis and design of almost any type of structure or structural component complete with sophisticated design capabilities to help you with your everyday analysis and design needs, RAM Elements delivers a productive and easy-to-use engineering analysis and design toolkit.

The CONNECT Edition

The SELECT[®] CONNECT Edition includes SELECT CONNECT services, new Azure-based services that provide comprehensive **learning, mobility, and collaboration** benefits to every Bentley application subscriber. *Adaptive Learning Services* helps users master use of Bentley applications through CONNECT Advisor, a new in-application service that provides contextual and personalized learning. *Personal Mobility Services* provides unlimited access to Bentley apps, ensuring users have access to the right project information when and where they need it. *ProjectWise[®] Connection Services* allow users to securely share application and project information, to manage and resolve issues, and to create, send, and receive transmittals, submittals, and RFIs.

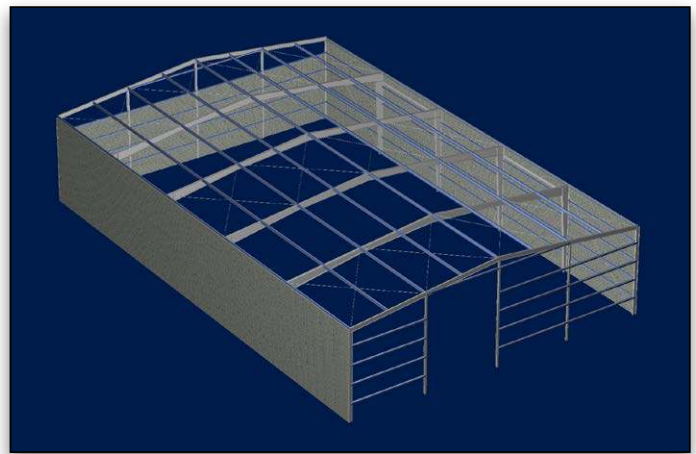
Unparalleled Flexibility from a Single Program

RAM Elements offers full 3D finite element analysis and design plus stand-alone or integrated design modules all in an easy-to-use package. RAM Elements offers features such as designing beams and columns, concrete or masonry shear walls, retaining walls, tilt-up walls, continuous beams, footings, and trusses — all with one familiar, easy-to-learn and use graphical interface. Instead of using a stand-alone finite element program for frames, trusses, and other structures, and specialty programs or spreadsheets for your everyday design needs, use RAM Elements for all these tasks. It eliminates the need to learn different programs for steel, concrete, masonry, wood, or cold-formed steel design and the need to purchase additional special purpose products for retaining walls or tilt-up walls. All the functionality you need is in one package.

Provides Comprehensive Structural Modeling

RAM Elements offers finite element analysis and design offerings that can tackle most structural analysis problems. Utilized by thousands of engineering firms, RAM Elements provides unmatched productivity for modeling, analyzing, designing, and optimizing structural elements and systems.

Numerous modeling capabilities are available to make modeling even complex projects quick and easy. For increased flexibility, a user customizable desktop environment is provided so your favorite commands can be a mouse click away. Physical member modeling features allow users to design as engineers, not finite element specialists. The sophisticated design modules for structural elements such as retaining walls or isolated shear walls can be run as integrated with the finite element model or in stand-alone design mode. With our continuous enhancements, RAM Elements stays up-to-date with code revisions.



Multiple materials can be used in your RAM Elements models as shown in this warehouse that combines built-up steel rafters and girders, hot-rolled steel columns, cold-formed purlins and girts, plus a perimeter CMU wall.

Quickly Design a Single Structural Element

Effortlessly design a single structural element such as a concrete wall, or utilize its integrated analysis and design capabilities to design these components as part of your 2D or 3D finite element model, which brings all the information into the design module automatically from the model. Current design modules include: trusses, concrete, masonry, and tilt-up walls with or without openings, spread and combined footings, continuous beams, concrete columns with interaction diagrams, and retaining walls.

All reinforced concrete modules will assist you in designing and detailing rebar requirements, perform all the necessary design checks, and produce complete drawings in CAD format along with detailed reports designed to go directly into your structural calculations.

Customizable

Model quickly and accurately any way you choose using customizable features. RAM Elements allows you to personalize almost every part of the program to your needs or company standards and rules of thumb. With numerous ways to lay out nodes, several ways to model members, quick shell creation, robust import options, and the ability to manipulate every object, you can quickly and accurately model to the detail and obtain the expected results. Customizable toolbars and personalized model views, display options, and unit systems are also available.

This allows for templates to be created easily for everyday design structures allowing you to save even more time on every project.

System Requirements

Processor

1.3 GHz or faster processor (x64)

Operating System

Microsoft Windows 7 or higher

RAM

2 GB minimum, 4 GB Recommended

Hard Disk

1 GB free disk space for installation
2 GB available for analyzing models

675 MB root folder installation
and other 300 MB for prerequisites
if needed

Display

Open GL compatible graphics card
with at least 512 MB in video memory

1024x768 minimum screen resolution

Extras

Latest OS service packs and graphics
card drivers always recommended

System printer correctly installed

To install the software, administrative
rights are absolutely necessary

**Find out about Bentley
at: www.bentley.com**

Contact Bentley

1-800-BENTLEY (1-800-236-8539)
Outside the US +1 610-458-5000

Global Office Listings

www.bentley.com/contact

RAM Elements At-A-Glance

Analysis

- Dynamic analysis (eigenvalue and response spectra) with CQC, SRSS and ABS methods for superposition and subspace iteration, Ritz vectors and Lanczos/Arnoldi for eigen analysis
- Iterative nonlinear P-Delta analysis
- Linear Buckling analysis (Lanczos/Arnoldi or Subspace iteration)
- Tension-only members
- Compression-only springs
- Springs to connect members for semi-rigid joints, setting the rotational stiffness at the member ends
- Flexible or rigid floor diaphragms
- Automatic mass generation with or without the need for rigid diaphragms
- Prismatic and real tapered member analysis (exact stiffness finite element)
- In-plane and out-of-plane stresses in shells
- Allows imposed nodal displacements
- Import of DXF, STAAD.Pro®, RAM Structural System, OpenRE and SAP2000™ as well as full integration with Structural Synchronizer (ISM) Export to DXF, SDNF, OpenRE and RAM SBeam

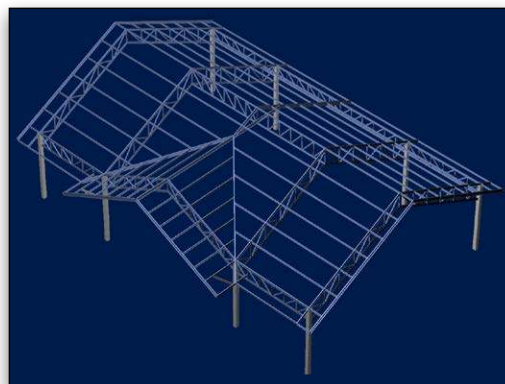
Design

- Hot rolled steel design per AISC 360-16, 2010 and 2005 (in both ASD or LRFD), AISC 341-16, 2010 and 2005, BS 5950-1:2000, AS 4100-1998, CSA S16-09 and NBR 8800-08
- Specialty checks for tapered members (AISC DG 25) and member torsion design (AISC DG 9)
- Cold-formed steel design per AISI S100-16, 2012, 2007 and 2001
- Reinforced concrete design per ACI 318-14, 11, 08, and 05, plus BS 8110-1:1997
- Reinforced/unreinforced masonry design per ACI 530-13, 11, 08, and 05 in ASD and SD
- Wood design (sawed lumber, timber, or glulam) per ANSI/AF&PA NDS-2005 in ASD and LRFD

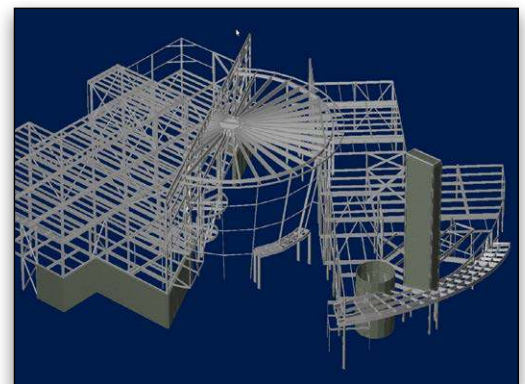
Design/Detailing Modules

- Reinforced concrete beam, column, and footing design
- Designs for flexure, shear, and torsion for beams

- Designs for axial, bi-axial bending, shear, and slenderness effects for columns
- Seismic provisions for column detailing
- Calculation of lap length, development length, and cutoff points
- Retaining wall design
 - » Analysis and design of reinforced or unreinforced concrete or masonry retaining walls
 - » Options to define cantilever, gravity, or restrained retaining walls (with a lateral restraint and pinned or fixed bases)
 - » Tapered stems or stems with several blocks with thickness and reinforcement changes
 - » Axial loads on the stem are considered (with or without eccentricity)
- Continuous beam design
 - » Steel, wood, or concrete beams
 - » Automatic skip loading
- Tilt-up wall design
 - » Fixed, pinned, or compression-only springs for the bottom support of the wall
 - » Simplified or finite element analysis methods
 - » Automatic design according to the ACI 551 code in addition to ACI 318
 - » Vertical concentrated and distributed in-plane loads: dead or live, with or without eccentricity
 - » lateral distributed out-of-plane loads: wind or seismic
 - » Isolated or continuous footings option
- Masonry wall design
 - » Bearing walls, shear walls, columns, and lintels
 - » Unreinforced or reinforced bearing and/or shear walls
 - » FEM (finite elements method) analysis of the wall
- Reinforced concrete shear wall design
 - » Consideration of boundary elements as columns or flanges
 - » Analysis of the wall with FEM
 - » Vertical concentrated loads with or without eccentricity
 - » Vertical distributed in-plane loads



RAM Elements performs cold-formed steel design including optimization of these thin-walled sections subjected to bi-axial bending.



Sykes Consulting, Inc. used RAM Elements to design part of the World of Coca-Cola Museum in Atlanta, Georgia.

Need a more comprehensive structural portfolio of trusted analysis and design applications?

Check out Structural Enterprise. Design in any infrastructure sector, with multiple materials, using any analysis method that is appropriate for the job. Learn more by visiting www.bentley.com/StructuralEnterprise

© 2019 Bentley Systems, Incorporated. Bentley, the Bentley logo, RAM, RAM Elements, ProjectWise, ProjectWise Connection Services, RAM Structural System, SELECT, and STAAD.Pro are either registered or unregistered trademarks or service marks of Bentley Systems, Incorporated or one of its direct or indirect wholly owned subsidiaries. Other brands and product names are trademarks of their respective owners. CS3128 08/19