



# STAAD® Advanced Concrete Design

Robust Concrete Design

## UP-LEVEL YOUR CONCRETE STRUCTURES

STAAD Advanced Concrete Design takes the design of your concrete structures to the next level. Designed by practicing engineers for practicing engineers, STAAD Advanced Concrete Design adds onto the power of Bentley's STAAD.Pro® analytical engine with robust concrete design.

## OPTIMIZE YOUR DESIGN

With STAAD Advanced Concrete Design, you can design a variety of concrete elements:

- ◆ Columns and walls – Rectangular, circular, L, T, C, and other irregular shapes
- ◆ Beams – Regular and flanged beams
- ◆ Foundations – Pad footings and pile caps
- ◆ Slabs (empirical method)
- ◆ Tank walls and tank slabs (FEM analysis)

Take advantage of the design capabilities to:

- ◆ Optimize and control design by setting carefully considered parameters
- ◆ Manage code compliance and safe design
- ◆ Set preferences for maximum and minimum reinforcing ratios, bar sizes, and bar spacing
- ◆ Perform optional checks like crack-width during the design process and ensure that your final design satisfies all requirements
- ◆ Automate your design process with the highly intuitive algorithm
- ◆ Generate practical rebar arrangements that recognize the continuity of columns and beams
- ◆ Perform manual override and interactive design with powerful, easy-to-use tools
- ◆ Enable corrective action using the cause analysis functionality

## DESIGN TO INTERNATIONAL STANDARDS

You can extend the reach of your business practice and take advantage of global design opportunities by using a wide range of international standards and specifications. With STAAD Advanced Concrete Design, it is easy to design and produce drawings according to global design standards and in compliance with publications from India (IS), United Kingdom (GB), United States (ACI), and Europe (EC), which can include Malaysia, Singapore, and Belgian National Annexes, Philippines (NSCP), and Australia (AS).

## COMPLY WITH SEISMIC REQUIREMENTS

When constructing in seismically active regions, additional provisions might need to be made for the effects of such events. With STAAD Advanced Concrete Design, you can ensure that your designs account for these provisions by generating seismic loads in the analysis according to the relevant building code and include the details for seismic force-resisting systems. You can consider these forces in the design of elements and, where applicable, the design of frames and the larger structural system. Also, you can enforce the ductility requirements of the selected design code in element proportioning and detailing. In case of structural shear wall, the critical checks such as provision of boundary elements are automated.

## CREATE COMPREHENSIVE QUANTITY TAKEOFFS

With your designs complete, it is easy to gain critical insight into concrete design alternatives with comprehensive material takeoffs and cost estimation organized by material, size, and shape. Additionally, you can gain a better understanding of the overall construction by obtaining formwork area and cost estimates up front.

## PRODUCE CONCRETE DRAWINGS AND SCHEDULES

The main requirement from the design process is the production of project documents. With STAAD Advanced Concrete Design, you can produce comprehensive reinforcing drawings including automated reinforcing labels, dimensions, and notes, as well as reinforcing placing drawings, including sections, plans, and details from the 3D model. You can customize all drawings in terms of colors for various entities and text styles to adhere to your company's standards and automatically update your drawings based on changes to the 3D model.

With the design checks complete, you can quickly produce detailed design drawings for beam line elevations, column line elevations, automatic cross section details, and bar termination geometry. You can create individual beam bar bending schedules, column schedule tables, and beam schedule tables.

## SYSTEM REQUIREMENTS

**MINIMUM:** 1280 x 1024 resolution, 500 MB free space, 2 GB of RAM, Microsoft Windows 8.1 (64 bit) – Standard, Pro, Enterprise or higher

**RECOMMENDED:** 4 GB of RAM, 24-bit high color, Microsoft Windows 10 (64 bit) – Home, Pro, Enterprise, and Education

**BROWSER COMPATIBILITY:** Not Applicable

# STAAD Advanced Concrete Design At-A-Glance

## DESIGN

- ♦ Automatically determine beam member continuity to provide continuous, practical reinforcement
- ♦ Automatically identify columns, walls, and their continuity over the height of the building to ensure continuity of reinforcement
- ♦ Produce practical designs by grouping. Identify groups of levels for design of beams or columns. Define groups of multiple elements for most critical design to be adopted for beams, columns, and foundations
- ♦ Control automatic designs through simple dialogues
- ♦ Control detailing requirements through simple dialogues
- ♦ Validate designs with summary graphics, which enable user modifications to prescribe alternative solutions
- ♦ Modify the design to suit special requirements using simple tools
- ♦ Lock and unlock designs to prevent accidental editing
- ♦ Produce detailed calculations. Generate drawings for general arrangements, test schedules, detailed sections, and elevations. Obtain detailed bills of quantity for each entity
- ♦ Design columns for standard or more complex shapes
- ♦ Determine slab design without having to specify a finite element mesh
- ♦ Design foundations like pad, stepped, or pile caps (up to six piles) for RCC and steel structures. For steel structures, design pedestal columns up to the foundation
- ♦ Design fluid-retaining structures, analyzed using parametric surface modeling in STAAD. The design of tank walls and slabs is supported for EN base code and other annexes. Identify walls and slabs analyzed with FEM models. Generate section forces for specified width at specified intervals. Produce zonal and curtailed detailing for walls. Manage design using flexural crack-width and drying-shrinkage crack-width

Element	Bar mark	Bar Nos.	Bar Dia.	Bar Shape	Cutting Length	Dimensions				Bar Dia.	Q	P	Q			
						A	B	C	D	E	R					
3	C11	B1	6	12		3870	300	1954	73	12	1618	48	LGT (M)	122	74	196
4	C11	B2	6	12		3580	300	1954	73	12	1123	48	WT (KG)	50	46	110
5	C11	B3	6	12		2095	300	1264	73	12	492	40				
6	C11	B4	6	12		2685	300	1756	73	12	492	48				
7	C11	S1L	9	8		1795	400	400								
8	C11	S4L	9	8		1280	142	400								
9	C11	S7L	9	8		1280	400	142								
10	C11	S9L	18	8		1795	400	400								
11	C11	S1L	18	8		1280	142	400								

Produce detailed bar bending schedules.

## CODES

- ♦ ACI 318M-11, ACI 318-11, ACI 318M-14, and ACI 318-14
- ♦ IS 456 and IS 13920-2106
- ♦ EN 1992 – base code national annexes – UK, Malaysia, Singapore, Belgium, and custom
- ♦ BS 8110-97
- ♦ NSCP 2015
- ♦ AS 3600-2018

## LOAD MANAGEMENT

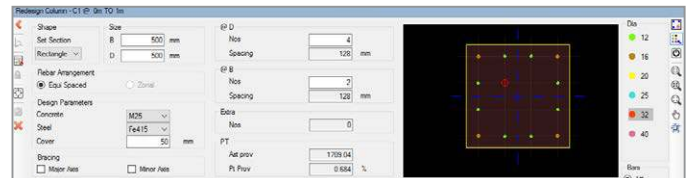
- ♦ Automatically calculate combinations taking the forces from the analytical model (static and dynamic) and use either the defined combination defined in the analytical model or from a template
- ♦ Define cross combinations for irregular buildings
- ♦ Use data from STAAD for nonlinear combinations

## DELIVERABLES

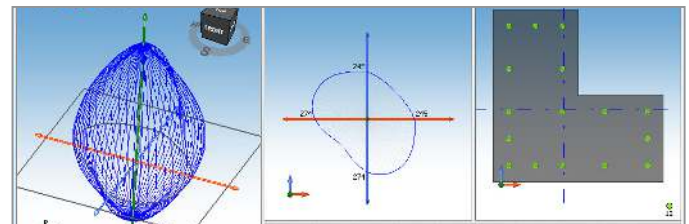
- ♦ Produce drawings in the universal standard DXF format
- ♦ Produce general arrangement drawings and reinforcing layouts, plus elevations with cross sections at key locations

## INTEROPERABILITY

- ♦ Produce reinforcement designs for structural objects to complement the analysis performed in STAAD.Pro and RAM® Structural System
- ♦ Import STAAD.Pro models with analysis results and filter by floors to design beams, slabs, pad footings, or columns/walls
- ♦ Manage the effect of revisions in analysis during column design. Import data from new analysis and check your existing design for revision impacts as well



Redesign reinforcement quickly and simply.



Produce column capacity graphs.

**Bentley**  
Advancing Infrastructure

FIND OUT MORE AT [BENTLEY.COM](http://BENTLEY.COM)

1.800.BENTLEY (1.800.236.8539) | Outside the US +1.610.458.5000 | [GLOBAL OFFICE LISTINGS bentley.com/contact](http://GLOBAL OFFICE LISTINGS bentley.com/contact)